

SreeSharp NewsReader v1.0 User Manual

Introduction

SreeSharp NewsReader is windows based desktop application for connecting news group servers (NNTP based) via HTTP. Most of the corporate offices don't allow news group access since they have blocked port 119 using firewall. SreeSharp NewsReader can connect any news servers, which built on RFC 977 specification, using HTTP (i.e. port 80/81).

System Requirements

Windows XP/NT/2000/2003 with .NET framework 1.1 or above.

The .NET Framework version 1.1 redistributable package can be downloaded the following link.

<http://www.microsoft.com/downloads/details.aspx?FamilyID=262d25e3-f589-4842-8157-034d1e7cf3a3&displaylang=en>

Installation

Download the SreeSharp NewsReader setup file from <http://www.SreeSharp.com>

Run SreeSharpNR_Setup.msi file.

How to use

After successful installation, start SreeSharp NewsReader from desktop short cut or start->Programs->SreeSharp folder. On the left pane, right click the SreeSharp NewsReader and click "Add News Server" menu. Then following screen will appear.



The screenshot shows a dialog box titled "News Server" with two sections: "Server Information" and "User Information".

Server Information:

- Display Name: Microsoft News Server
- Server Address: news.microsoft.com
- This server requires me to log on
- Account Name: [Empty text box]
- Password: [Empty text box]
- Test Connection: [Button]

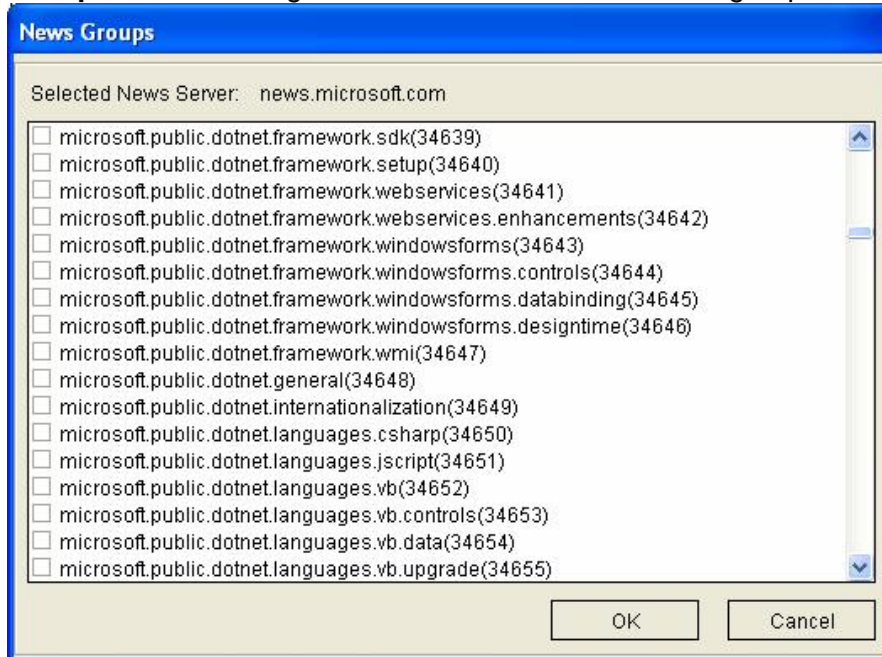
User Information:

- Name: Sreejumon
- Reply Address: sreejumon@gmail.com

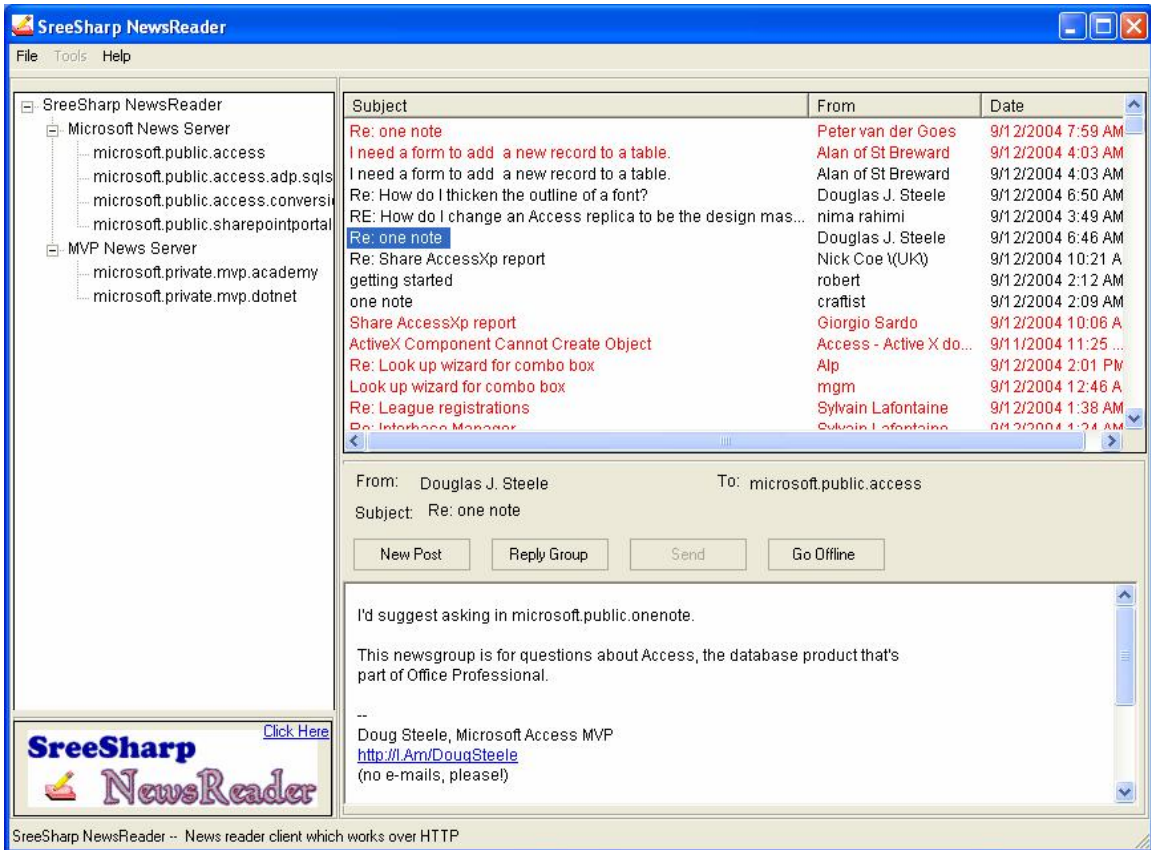
Buttons: Ok, Cancel

Enter valid News Server address and other details. For private news group, you have to enter Account name and Password. The “Test Connection” will check the server connectivity, it wont check the authentication details.

After you add one News Server, Right click on the server and select “**Add News Group**”. The following screen will list all available newsgroups.



Now select the Newsgroups using check box, and click “OK”. Once you select the newsgroup, click on newsgroup name to see all posts.



Support and updates

Please visit www.sreesharp.com for future updates and support.